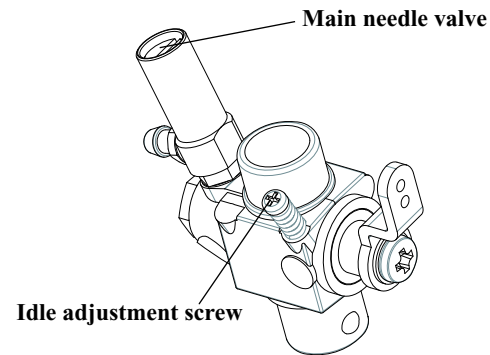


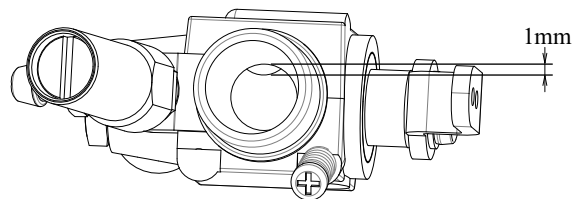
The carburetor has 2 setting points that can be adjusted.  
(see the following figure)



Carburetors are very sensitive to minor adjustments.  
Any adjustments should be made in increments of 1/16th to 1/8th of-a-turn, at a time.  
New carburetor are set for easy starting at the factory, but are not considered to be set for optimal performance.  
The following factory settings are good baseline reference settings if you experience difficulty tuning the engine, or it won't start.

**Main needle valve:**  
2-1/2 to 3 turns counter clockwise, out from the closed position.

**Idle adjustment screw:**  
should be set so that the throttle is open approximately 1mm (0.039inch) from the "just-closed" position.



## ENGINE CARE

Always keep the outside of your engine clean. Use clean, fresh fuel and keep your fuel can, pump, and fueling system free from dirt particles. Install a fresh fuel filter between the fuel tank and carburetor, and between your fuel pump and filling line to prevent any potential of dirt entering your engine.

Model fuel contains alcohol, which is hydroscopic (meaning that it attracts moisture from the atmosphere). This can cause corrosion to the internal engine parts.

After each running session, run all the fuel out from inside the engine and disconnect the fuel line from the carburetor. Put 4 or 5 drops of after-run oil (Marvel Mystery Oil, Prather, Pacer, etc.) into the carburetor and turn the propeller over by hand several times to protect the engine bearings and internal parts from corrosion.

The use of after-run oil is also important during periods of prolonged storage (such as winter). We suggest removing the engine from the model; and liberally applying oil into the carburetor and glow plug hole, wrap your engine in a soft cloth and store in a sealed plastic bag.

Do not dismantle your engine unnecessarily, as this may upset precision fits such as piston/cylinder and crank pin/connecting rod assembly.  
If it is necessary to clean your engine completely (such as after a crash), remove only the carburetor (do not disassemble), muffler, back plate, and cylinder head. Flush the entire engine with fresh fuel and reassemble.  
Apply after-run oil to the engine and store or re-install into the model.  
Do not disassemble your engine further than described above, or your warranty may be voided!

## WARRANTY

Your engine is guaranteed to be free from defects in materials and workmanship for a period of 1 year from the date of purchase when returned for service accompanied by proof of purchase (register receipt, credit card invoice, etc c).  
Crash damage or problems caused by improper use are specifically not covered under this warranty.  
Damage caused by customer disassembly, use of improper or substandard fuel, use of improper accessories (such as propellers, glow plug, etc.) or any use of the product other than its specific intended use will automatically void this warranty.

## SERVICE PRODUCTS

Should your TEAM INFINITY engine require service, please follow the following guidelines.

1. Do not return the engine to the place of purchase, as they are not authorized or equipped to perform service.
2. Remove the engine from the model. We can not accept equipment for service other than the engine.
3. Along with your engine and proof of purchase, enclose a complete written explanation detailing the problem(s) with your engine. Be sure to include your name, address and daytime telephone number.
4. The charges for repairs will be billed to you C.O.D. Please mention if your wish to have an estimated of repair charges prior to us beginning service. (This may cause a slight delay in your repair.)

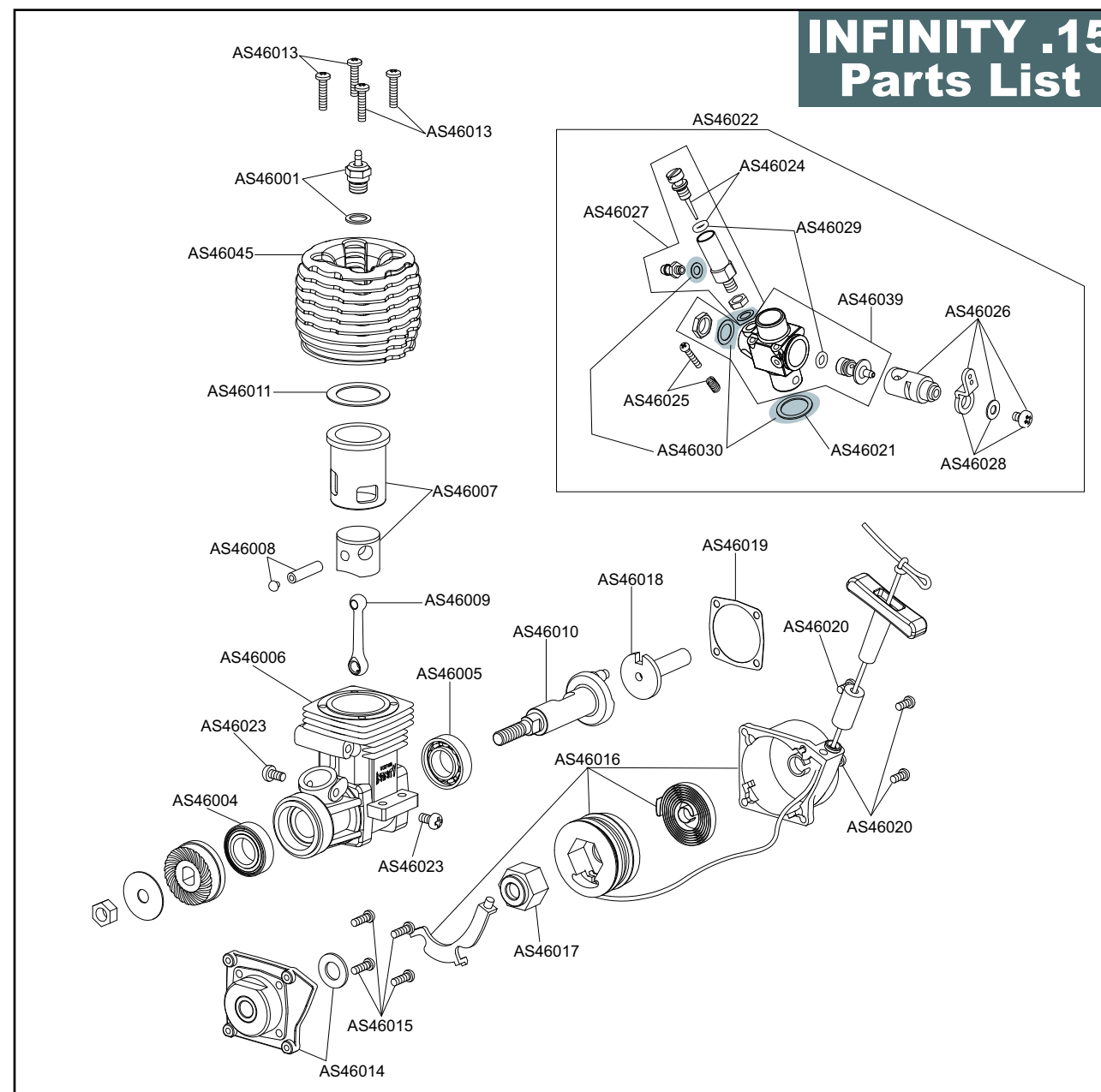
=Shipping address for repair engine=



**Hobbies Creative International Co., Ltd.**

2F., No.333, Sec.4 Chengde Rd.,  
Shihlin, Taipei 111 Taiwan  
www.team-infinityrc.com  
info@team-infinityrc.com

Printed in Japan



NO.	DESCRIPTION	NO.	DESCRIPTION
AS46001	Normal Type Glow Plug w/Gasket (Not Blister Package)	AS46019	Back Plate Gasket (1pcs)
AS46004	Crank Shaft Bearing Front	AS46020	Screw for Pull Start (4pcs)
AS46005	Crank Shaft Bearing Rear	AS46021	Carburetor Gasket (1pcs)
AS46006	15 Crank Case w/o Bearing (INFINITY Logo)	AS46022	Rotary Carburetor Assembly for 15
AS46007	15 Piston & Sleeve Set (Nickel Plating)	AS46023	Screw Set for Carburetor (2pcs)
AS46008	15 Wrist Pin (w/Pad)	AS46024	Needle w/O-Ring
AS46009	Conrod for Standard Type	AS46025	Adjustment Screw Set w/Spring
AS46010	15 Crank Shaft for Pull Start	AS46026	Rotor Set for 15 (4.6mm)
AS46011	Head Shim for 15 ( 1pcs)	AS46027	Needle and Needle Valve Set
AS46013	Screw for Head ( 4pcs)	AS46028	Throttle Arm Set
AS46014	Back Plate for Pull Start	AS46029	Carburetor O-Ring Set (2pcs)
AS46015	Screw for Back Plate (4pcs)	AS46030	Carburetor Gasket Set (4pcs)
AS46016	Pull Start Assembly w/o One-Way	AS46039	Carburetor Mainbody
AS46017	One-Way Bearing	AS46045	15 Die-casting Head (Black)
AS46018	One-Way Bearing Shaft		